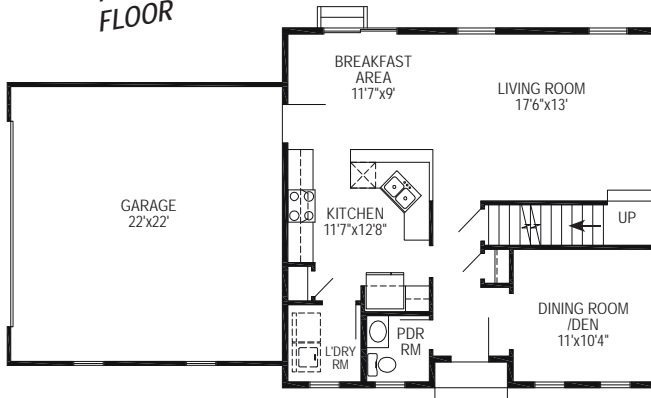




Photo shows a rendering of an RGB custom design and may show optional features which vary from the standard plan. Refer to the floor plan for standard plan features which may be customized to make your new RGB home everything you want it to be.

The Davidson Design

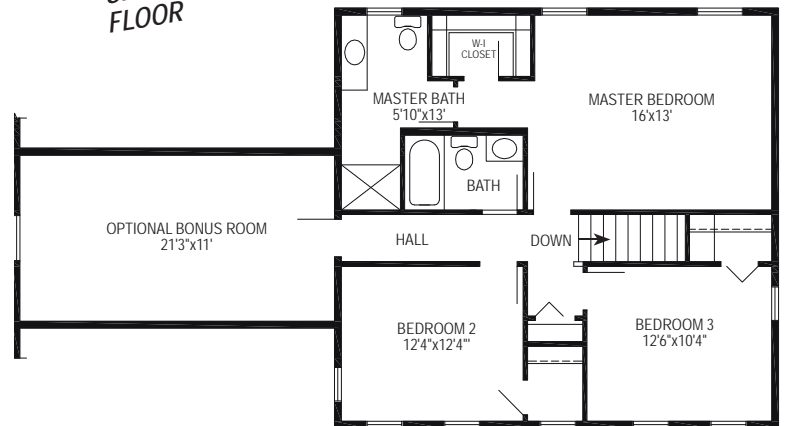
FIRST FLOOR



SQUARE FOOTAGE SUMMARY*

| | |
|-----------------------|-------|
| 1st floor | 828 |
| 2nd floor | 817 |
| Finished living space | 1,645 |
| Optional Bonus Room | 261 |
| Crawlspace | 828 |
| Entry Porch | 17 |
| Two-car Garage | 484 |

SECOND FLOOR



New RGB Exclusive Design! This 3/4 bedroom 2 1/2 bath Bucks County Colonial is sure to please. It has everything you are looking for - from its open floorplan for family gatherings to its spacious Living Room & Breakfast area; this home will satisfy your needs. The upper level boasts an over-sized Master Bedroom with a walk-in closet and two generously-sized bedrooms. The optional bonus room is available for those needing another bedroom, office or playroom.

Look for the name brands you know mean quality, and check out RGB Quality Building Features at www.RGBhomes.com

Impress yourself with a visit, call —

877 RGB-1986

Open Every Day



"A builder to believe in..." since 1986

*Room dimensions and square foot calculations shown here are approximate. Plans are subject to field variations based on property characteristics and modifications that may be made from time to time. Your RGB Sales Representative will provide you with complete and accurate information as you design your own personally customized RGB home. RGB ENTERPRISES, INC. • RGB REAL ESTATE, LLC • © RGB CUSTOM BUILDERS 2008 DAV208

