



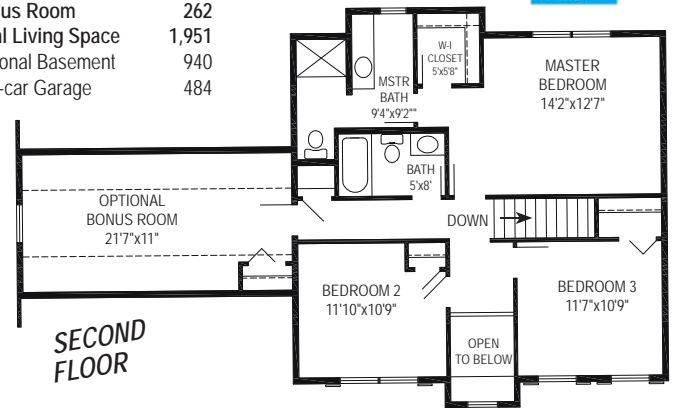
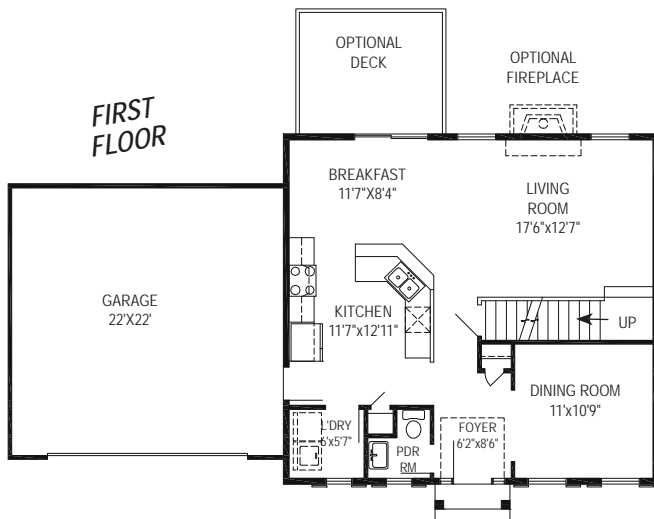
Photo shows an RGB Jenkins design rendering and may show optional features which vary from the standard plan. Refer to the floor plan for standard plan features which you may customize to make your new RGB home everything you want it to be.

The Jenkins Design

with Bonus Room



SQUARE FOOTAGE SUMMARY*	
1st floor	840
2nd floor	849
Finished living space	1,689
Bonus Room	262
Total Living Space	1,951
Optional Basement	940
Two-car Garage	484



A place you'll look forward to come home to! The Jenkins exudes spaciousness and elegance. From the two-story foyer which expands to the dining room and onto the open living space throughout the main level of this home, you will get the feeling you are at home! The kitchen overlooks the living room and breakfast area and allows entry from all sides and is conveniently just steps away from the garage. The second floor

accommodates three bedrooms including an impressive master bedroom with a walk-in closet and master bathroom. The Jenkins is available with an optional bonus room adding space for another bedroom, guest room, playroom, storage room, craft room or whatever type of room your busy family may need! This home is calling you to move in soon!

Look for the name brands you know mean quality, and check out RGB Quality Building Features at www.RGBhomes.com

Impress yourself with a visit, call —
877 RGB-1986
 Open Every Day

*Room dimensions and square foot calculations shown here are approximate. Plans are subject to field variations based on property characteristics and modifications that may be made from time to time. Your RGB Sales Representative will provide you with complete and accurate information as you design your own personally customized RGB home.
 RGB ENTERPRISES, INC. • RGB REAL ESTATE, LLC • ©RGB CUSTOM BUILDERS 2008 JEN308

