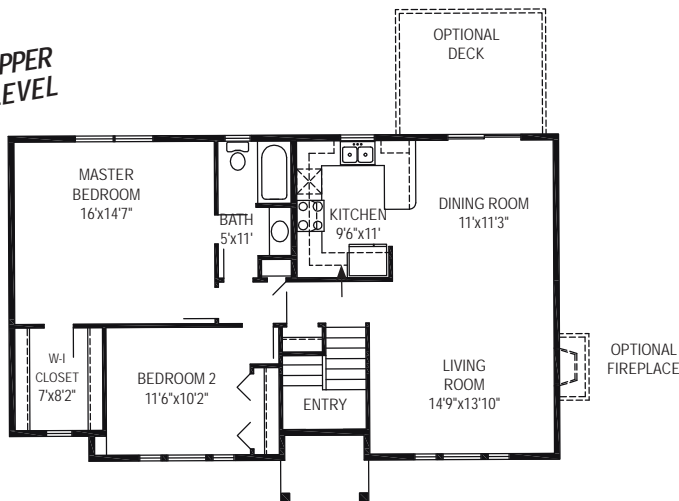




Photo shows an RGB Jenkins design rendering and may show optional features which vary from the standard plan. Refer to the floor plan for standard plan features which you may customize to make your new RGB home everything you want it to be.

The Leighton Design

UPPER LEVEL

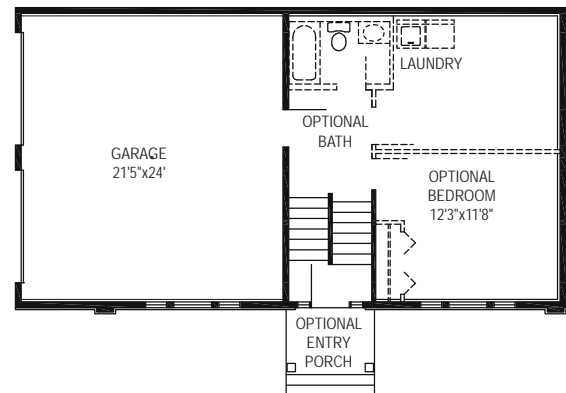


SQUARE FOOTAGE SUMMARY*

1st floor	1,119
Finished living space	1,119
Basement	543
Two-car Garage	513



LOWER LEVEL



Efficiency, convenience, affordability and potential for growth all in one home! The Leighton floor plan allows for the greatest use of space. An efficient kitchen design with a breakfast bar opening up to the dining area. The large master bedroom boasts a large walk-in closet. A second bedroom with large closet is also located on this main level. The lower level includes a

2 car garage and has the potential for another bedroom & bathroom, laundry room or any type of room you desire. The sky's the limit!

Look for the name brands you know mean quality, and check out RGB Quality Building Features at www.RGBhomes.com

Impress yourself with a visit, call —

877 RGB-1986

Open Every Day



"A builder to believe in..." since 1986

*Room dimensions and square foot calculations shown here are approximate. Plans are subject to field variations based on property characteristics and modifications that may be made from time to time. Your RGB Sales Representative will provide you with complete and accurate information as you design your own personally customized RGB home.
 RGB ENTERPRISES, INC. • RGB REAL ESTATE, LLC • ©RGB CUSTOM BUILDERS 2008 LEI208

