

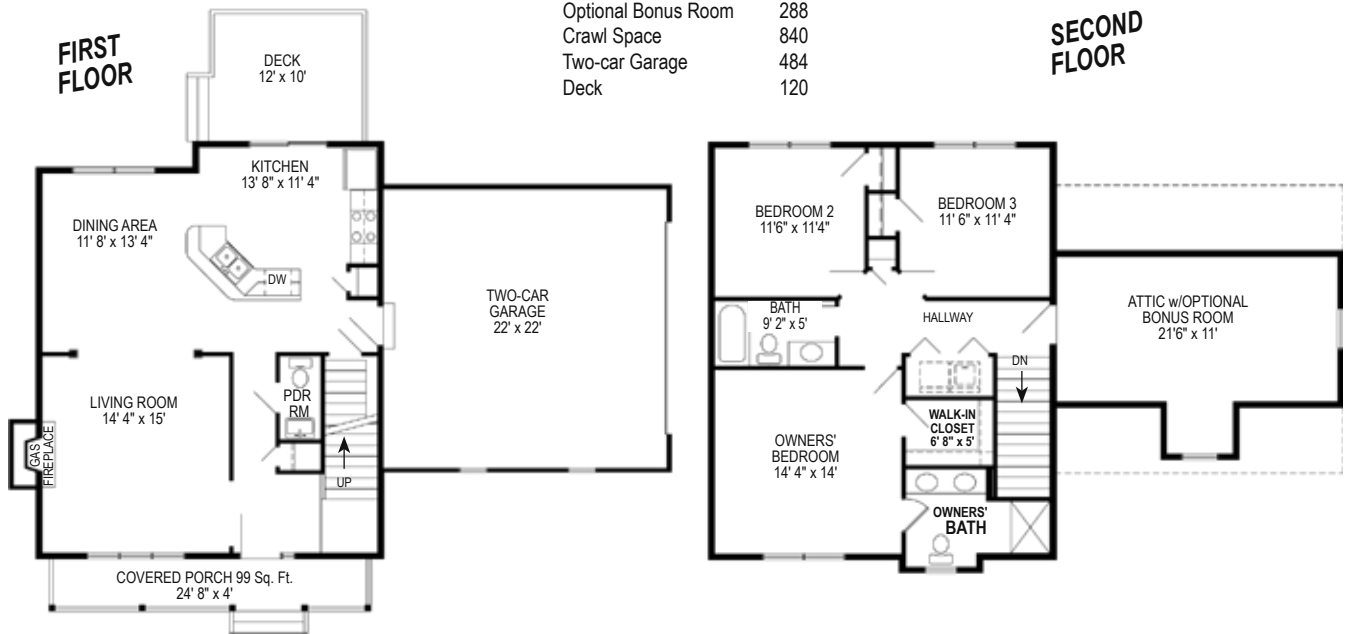


Photo shows a rendering of an RGB custom design and may show optional features which vary from the standard plan. Refer to the floor plan for standard plan features which may be customized to make your new RGB home everything you want it to be.

**SQUARE FOOTAGE SUMMARY\***

1st floor	840
2nd floor	817
<b>Finished living space</b>	<b>1,657</b>
Optional Bonus Room	288
Crawl Space	840
Two-car Garage	484
Deck	120

## *The Sampson Design*



The welcoming front porch of this 3 bedroom, 2 1/2 bath house sets the mood for a home that caters to families and friends. The living room, with a cozy gas fireplace, is located to the left of the foyer. The dining area is open to the living room and kitchen towards the back of the house. An angled island in the kitchen is situated to easily cater to social activities of any size. Glass doors bring the outdoors in and help to create the perfect access to easy outdoor entertaining or relaxation. The

powder room and door to a two car garage complete the first floor plan. Upstairs, the owner's bedroom suite has a walk-in closet, along with a private bath with double sinks for that no-hassle morning rush. Two other bedrooms share a hall bath. The laundry is conveniently located on the 2nd floor. An optional bonus room or 4th bedroom completes the upstairs of this home.

Look for the name brands you know mean quality, and check out RGB Quality Building Features at [www.RGBhomes.com](http://www.RGBhomes.com)

Impress yourself with a visit, call —  
**877 RGB-1986**  
 Open Every Day



"A builder to believe in..." since 1986

\*Room dimensions and square foot calculations shown here are approximate. Plans are subject to field variations based on property characteristics and modifications that may be made from time to time. Your RGB Sales Representative will provide you with complete and accurate information as you design your own personally customized RGB home. RGB ENTERPRISES, INC. • RGB REAL ESTATE, LLC • ©RGB CUSTOM BUILDERS 2008 SAM208

