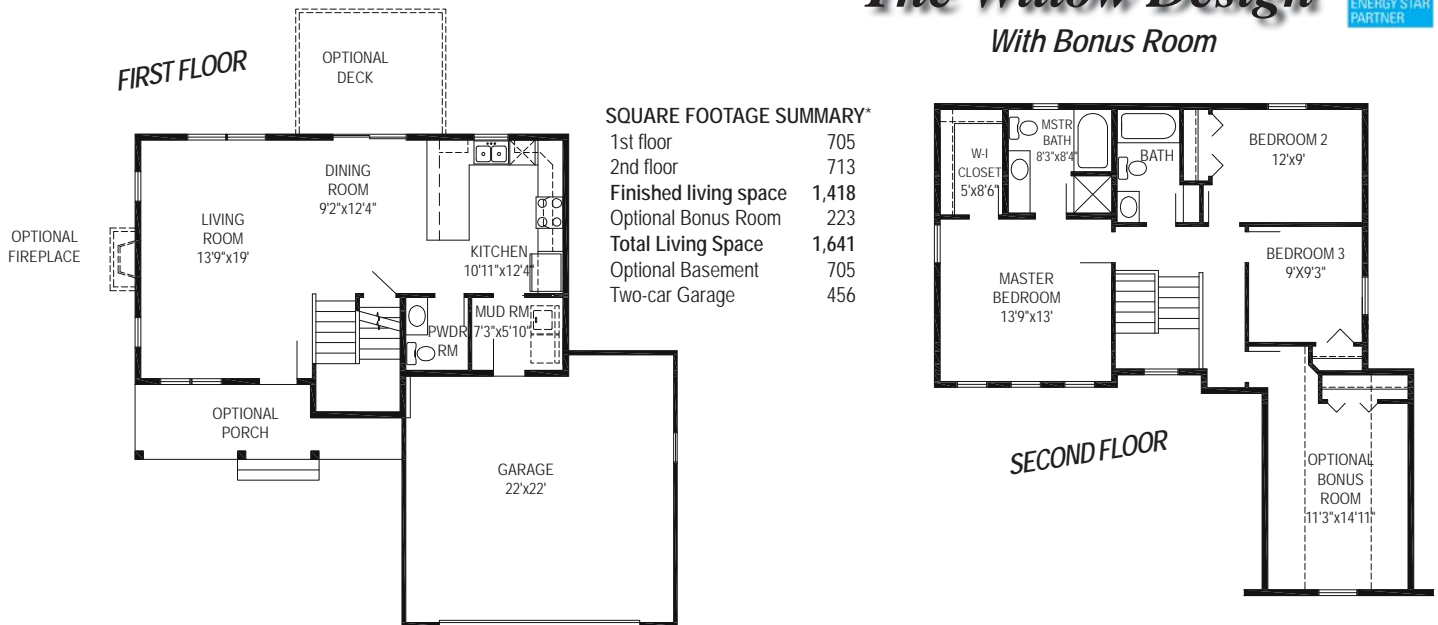




Photo shows an RGB Willow design rendering and may show optional features which vary from the standard plan. Refer to the floor plan for standard plan features which you may customize to make your new RGB home everything you want it to be.

## The Willow Design With Bonus Room



**SQUARE FOOTAGE SUMMARY\***

1st floor	705
2nd floor	713
Finished living space	1,418
Optional Bonus Room	223
Total Living Space	1,641
Optional Basement	705
Two-car Garage	456

The open floor plan in the Willow gives new meaning to family gatherings! The spacious kitchen with breakfast bar opens to the dining area. The oversized living room looks out to three sides allowing in nature. A mud/laundry room with entrance from the 2 car garage is a much desired feature. The master bedroom is a perfect private retreat with plenty of space in the large

walk-in closet for all your wardrobe seasons and a master bath with a large bathtub and separate walk-in shower. Two more bedrooms grace the second level and a possible third room should you choose to include the bonus room; and, of course, another full bathroom for the other members of the household. The Willow is sure to make you feel at home!

Look for the name brands you know mean quality, and check out RGB Quality Building Features at [www.RGBhomes.com](http://www.RGBhomes.com)

Impress yourself with a visit, call —  
**877 RGB-1986**  
Open Every Day

\*Room dimensions and square foot calculations shown here are approximate. Plans are subject to field variations based on property characteristics and modifications that may be made from time to time. Your RGB Sales Representative will provide you with complete and accurate information as you design your own personally customized RGB home.  
RGB ENTERPRISES, INC. • RGB REAL ESTATE, LLC • © RGB CUSTOM BUILDERS 2008 WIL308



"A builder to believe in..." since 1986

