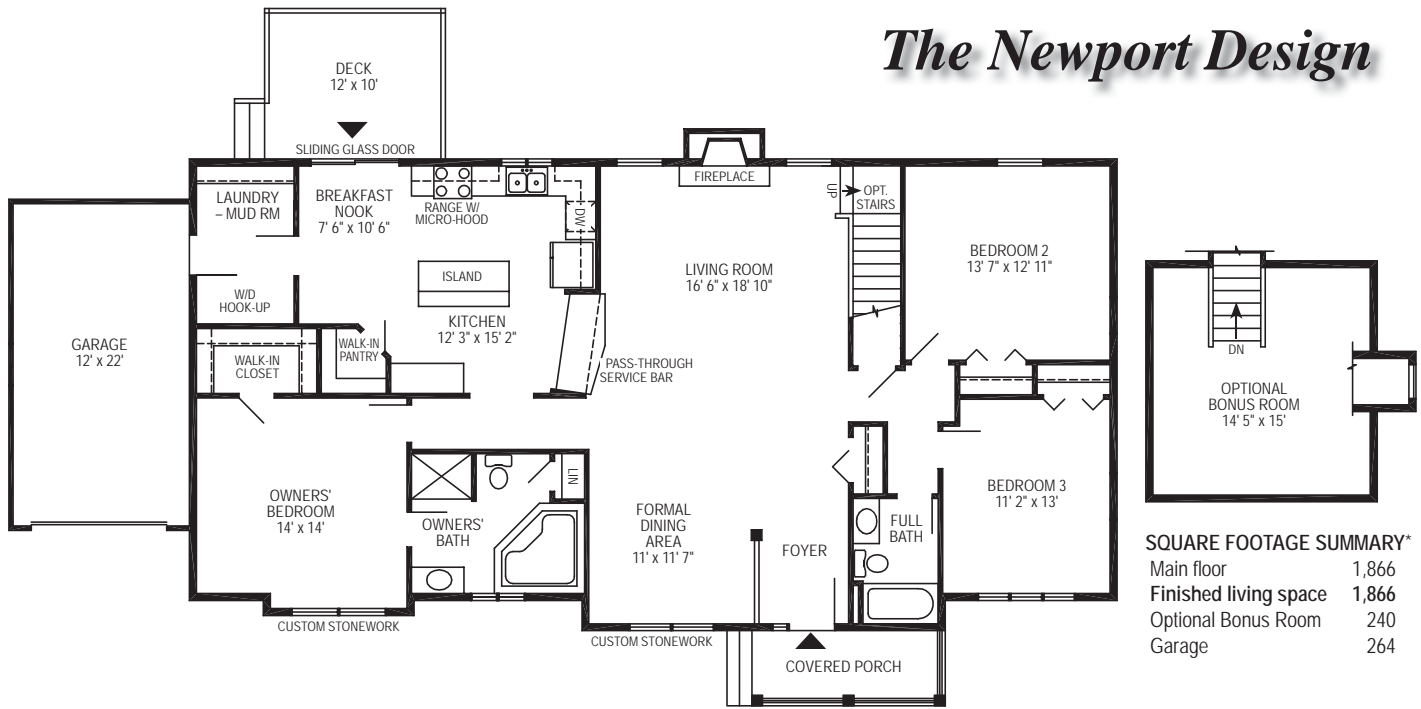




Photo shows an RGB Newport design custom built for an individual RGB homebuyer and may show optional features which vary from the standard plan. Refer to the floor plan for standard plan features which you may customize to make your new RGB home everything you want it to be.

## The Newport Design



**SQUARE FOOTAGE SUMMARY\***

Main floor	1,866
Finished living space	1,866
Optional Bonus Room	240
Garage	264

From its covered porch entry to its backyard deck, ranch style convenience exceeds expectations in this 3-bedroom, 2-bath home. Plan to entertain with ease in a spacious great room where formal dining and fireside lounging are both served by a convenient pass-through from the kitchen that's ideal for buffet service. Note the kitchen's walk-in pantry, sun-filled breakfast nook, and center island that adds cabinetry and countertop workspace. Look for the name brands you know mean quality, and check out RGB Quality Building Features at [www.RGBhomes.com](http://www.RGBhomes.com)

to the already-efficient kitchen — and know you've found a home that has it all — even the option to add the second floor bonus room for tucked-away private enjoyment. Separated from other sleeping quarters for quiet relaxation, your private bedroom suite is a rewarding retreat where a walk-in closet provides convenience, and a sumptuous soaking tub awaits your arrival at the end of a busy day.



Impress yourself with a visit, call —  
**877 RGB-1986**  
 Open Every Day

\*Room dimensions and square foot calculations shown here are approximate. Plans are subject to field variations based on property characteristics and modifications that may be made from time to time. Your RGB Sales Representative will provide you with complete and accurate information as you design your own personally customized RGB home. RGB ENTERPRISES, INC. • RGB REAL ESTATE, LLC • © RGB CUSTOM BUILDERS 2008 L0208

