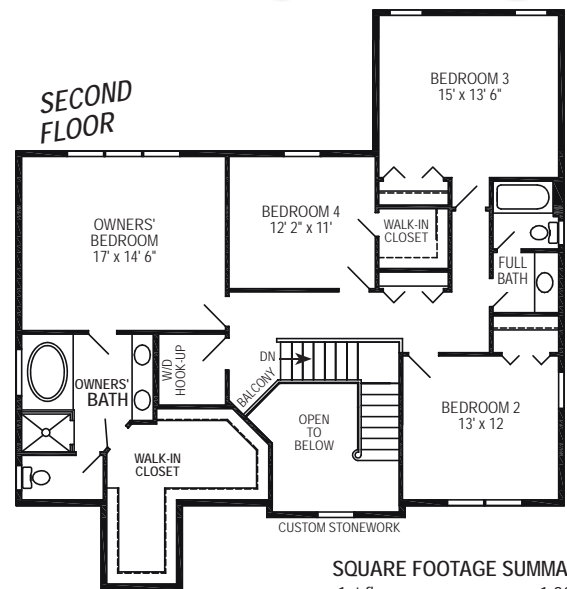
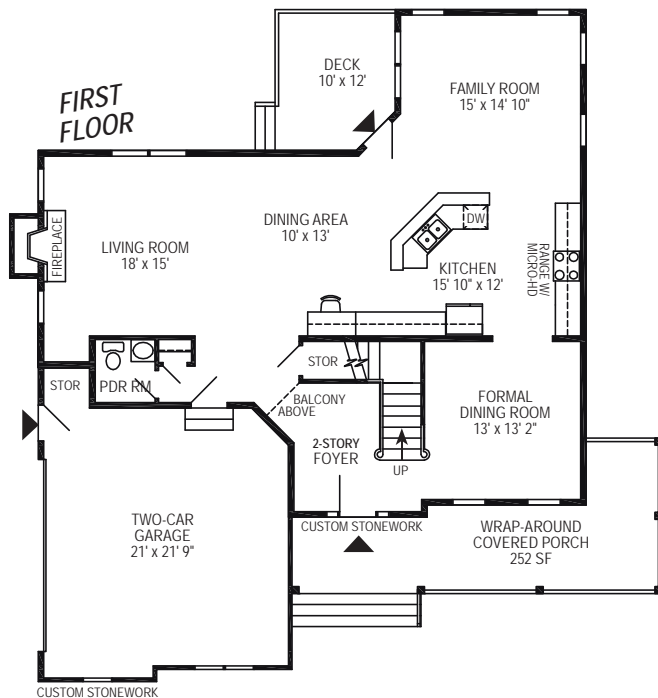




Photo shows an RGB Oxford design custom built for an individual RGB homebuyer and may show optional features which vary from the standard plan. Refer to the floor plan for standard plan features which you may customize to make your new RGB home everything you want it to be.

The Oxford Design



SQUARE FOOTAGE SUMMARY*	
1st floor	1,387
2nd floor	1,443
Finished living space	2,830
Optional Basement	1,387
Two-car Garage	478

A two-story, gathering-room foyer with a wrap-around, oak-railed stair provides a gracious welcome to this versatile home that caters to a variety of entertainment styles, with both formal and casual dining arrangements. And you can expect the open layout of spacious rooms to be ideal for large gatherings where guests can meander between the family room, the living room's fireside setting or out to the backyard deck — all with convenience to the kitchen where an angled island

and abundant cabinetry and counter space will cater handily and handsomely to social activities of any size. Upstairs, 3 spacious bedrooms easily share the divided hall bath and the convenience of the nearby laundry, while your own bedroom suite provides a pampering retreat with a dressing-room/walk-in closet and a well-appointed bath with a dual-sink vanity and luxurious soaking tub.

Look for the name brands you know mean quality, and check out RGB Quality Building Features at www.RGBhomes.com

Impress yourself with a visit, call —
877 RGB-1986
 Open Every Day



*Room dimensions and square foot calculations shown here are approximate. Plans are subject to field variations based on property characteristics and modifications that may be made from time to time. Your RGB Sales Representative will provide you with complete and accurate information as you design your own personally customized RGB home.
 RGB ENTERPRISES, INC. • RGB REAL ESTATE, LLC • © RGB CUSTOM BUILDERS 2008 00308

