

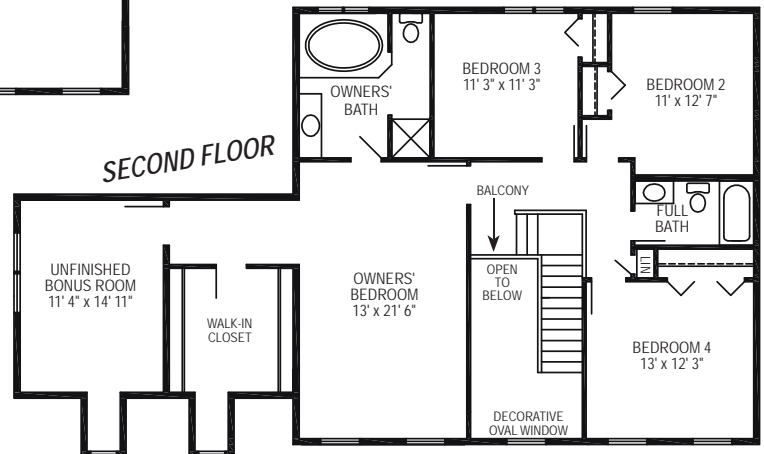
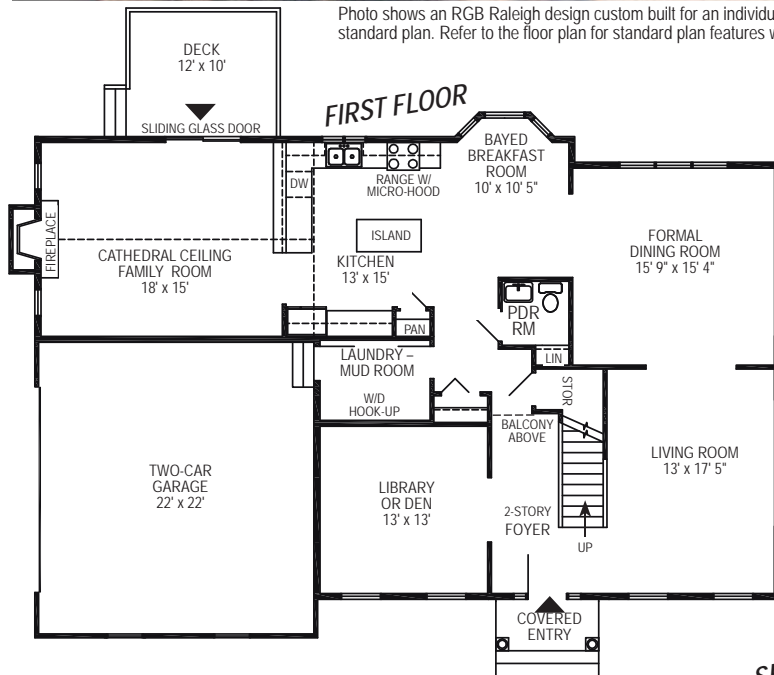


Photo shows an RGB Raleigh design custom built for an individual RGB homeowner with optional stonework and three dormers which are options to the standard plan. Refer to the floor plan for standard plan features which you may customize to make your new RGB home everything you want it to be.

The Raleigh Design

SQUARE FOOTAGE SUMMARY*

1st floor	1,644
2nd floor	1,270
Finished living space	2,914
Unfinished Bonus Room	201
Optional Basement	1,644
Two-car Garage	500



Impressive dimensions and a pillared, covered entry bring an awesome presence to this 4 bedroom, 2 1/2 bath home where center hall convenience is announced with a 2-story foyer flanked by the library/den and formal living room. In the family room, a cathedral ceiling peaks above the fireplace while patio doors invite backyard views, also shared by the kitchen, dining room and breakfast room bay. Upstairs, your bedroom suite is a private retreat more generous than most, with a walk-in dressing room closet and a pampering soaking-tub bath -- plus a sunny bonus room you can finish-off at any point in time for lounging, working out, or working at home.

High pitched rooflines invite you to add an optional walk-up attic with sunlight-inviting dormers -- adding even more substance and style to this impressive estate-styled home.

Look for the name brands you know mean quality, and check out RGB Quality Building Features at www.RGBhomes.com

Impress yourself with a visit, call —
877 RGB-1986
 Open Every Day



"A builder to believe in..." since 1986

*Room dimensions and square foot calculations shown here are approximate. Plans are subject to field variations based on property characteristics and modifications that may be made from time to time. Your RGB Sales Representative will provide you with complete and accurate information as you design your own personally customized RGB home.
 RGB ENTERPRISES, INC. • RGB REAL ESTATE, LLC • © RGB CUSTOM BUILDERS 2008 B0208

